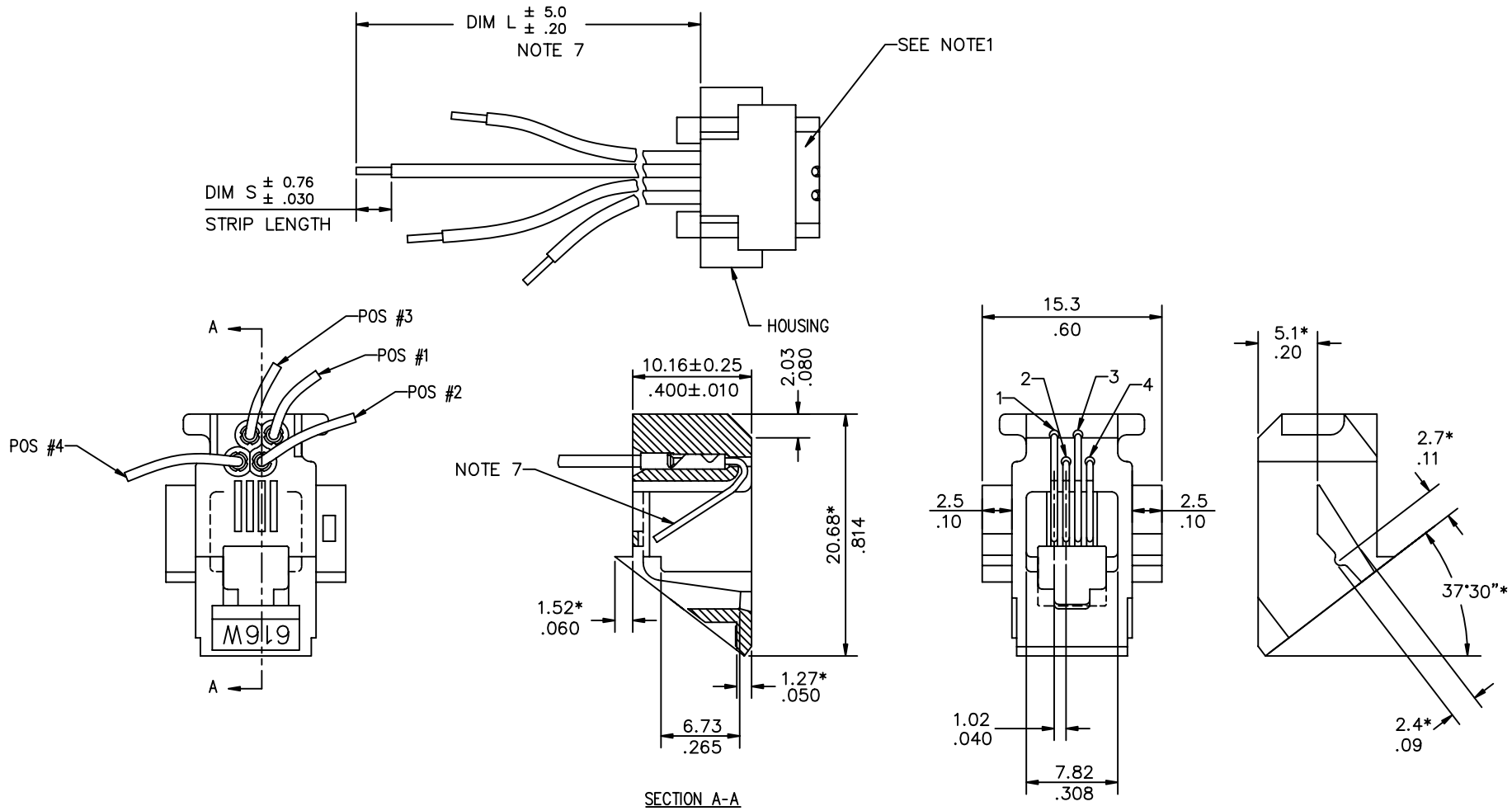


Tous droits strictement réservés. Reproduction ou communication à des tiers int
 sous aucune forme que ce soit sans autorisation écrite du propriétaire.
 propriété de FCI. Droits de reproduction FCI.



All rights strictly reserved. Reproduction or issue to third parties in any form
 without written authority from the proprietor.
 Property of FCI. Copyright FCI.

PRODUCT NO.
 SEE TABLE OF SHEET 2



mat'l code				tolerance unless otherwise specified				CUSTOMER		FCI	
rev.	ecn no.	dr	date	linear	0.0 ± 0.25/00 ± .01		COPY		www.fciconnect.com		
					0.00 ± 0.13/000 ± 0.005		projection		title		
T	T80338	CL	09/10/98		0.000 ± 0.05/0000 ± 0.002				616W MOD JACK ASSY WITH STRIPPED ENDS		
U	T70398	TC	09/22/97								
V	T90289	TC	08/04/99	angles	± 0°30"						
W	T90356	TC	10/14/99	dr	T.CHIEN	09/07/93	unit	product family	MOD JACK	code	
X	N05-0064	YS	03/04/05	engr	T.CHIEN	09/07/93	mm/inch	size	dwg no.	TWN	
Y	N08-0097	SH	09/25/08	chr	J.TSAO	09/08/93	scale	A4	76361	sheet	
				appd	J.TSAO	09/08/93	N/A			1 OF 2	
sheet	revision	Y	Y								
index	sheet	1	2								



PRODUCT NO.	POS. NO.	WIRE COLOR	DIM L	WIRE STYLE	HOUSING MATERIAL	STRIP LENGTH DIM S	SPLICE FINISH	GOLDED WIRE	REMARK
76361-010 76361-010LF	1	RED	78.00/3.071	E	ABS UL94V-0	3.00/.118	UNPLATED	30 u" Au ^⑩	FOR 76361-010LF STRIPPED END MUST BE SOLDER DIPPED WITH PURE TIN
	2	WHITE	190.00/7.480						
	3	GREEN	190.00/7.480						
	4	BLACK	78.00/3.071						
76361-014 76361-014LF	1	RED	45.00/1.771	B	ABS UL94V-0 GRAY	3.00/.118	UNPLATED	30 u" Au ^⑩	
	2	WHITE	180.00/7.087						
	3	GREEN	180.00/7.087						
	4	BLACK	45.00/1.771						
76361-015 76361-015LF	1	RED	40.00/1.575	B	ABS UL94V-0 GRAY	3.00/.118	UNPLATED	30 u" Au ^⑩	
	2	WHITE	180.00/7.087						
	3	GREEN	180.00/7.087						
	4	BLACK	40.00/1.575						
76361-031 76361-031LF	1	RED	64.00/2.520	B	ABS UL94V-0 GRAY	4.00/.157	UNPLATED	30 u" GXT	
	2	WHITE	218.00/8.590						
	3	GREEN	218.00/8.590						
	4	BLACK	64.00/2.520						

NOTES:

- MAT'L HOUSING: SEE TABLE.
- MAT'L GOLD WIRE: PHOSPHOR BRONZE ALLOY UNS C51000. PLATING: 0.76um/30u" Au OVER 2.54um/100u" Ni OR SPECIFIED.
- INSULATED WIRE:
 - STYLE A: 27 AWG. 7 STRANDS OF TINNED COPPER WIRE, PVC INSULATION.
 - STYLE B: 27 AWG. 7 STRANDS OF TINNED COPPER WIRE, TOP COATED WITH TIN PVC INSULATION.
 - STYLE C: 26 AWG. 7 STRANDS OF TINNED COPPER WIRE, TOP COATED WITH TIN PVC INSULATION.
- STYLE D: 26 AWG. 7 STRANDS OF TINNED COPPER WIRE, PVC INSULATION.
- STYLE E: FLEXIBLE WIRE. 0.08mm DIA. X 19 CONDUCTOR BARE COPPER WIRE. UNPLATED IN SOLD STRAND. PVC INSULATION.
- FOR FUNCTIONAL MECHANICAL AND VISUAL REQUIREMENTS. SEE PRODUCT SPECIFICATION BUS-12-003
- TERMINAL MAT'L: BRASS ALLOY, PLAIN.
- ALL DIM MARKED WITH ASTERISKS ARE REF. FOR MOUNTING.
- WHEN A 4-POSITION PLUG IS INSERTED INTO THE HSG. THE CONTACT WIRE MAY NOT PROTRUDE OUT OF THE REAR WALL OF HSG.
- IF LF P/N THE PRODUCT MEETS EUROPEAN UNION DIRECTIVES AND OTHER COUNTRY REGULATIONS AS DESCRIBED IN GS-22-008.
- IF LF P/N THE PACKAGING MEETS GS-14-920 SPECIFICATION.
- EQUIVALENT THICKNESS Au AND GXT PLATING HAVE SAME FUNCTION AND THEY ARE ALTERNATIVE BY THE CUSTOEMR .

mat'l code		tolerance unless otherwise specified		CUSTOMER COPY	www.fciconnect.com
rev.	ecn no.	dr	date	linear	
Y				0.0 ±0.25/00 ±.01	
				0.00 ±0.13/000 ±.005	title
				0.000 ±0.05/0000 ±.002	616W MOD JACK ASSY WITH STRIPPED ENDS
				angles ± 0°30"	product family
				dr T.CHIEN 09/07/93	MOD JACK
				enr T.CHIEN 09/07/93	code
				chr J.TSAO 09/08/93	TWN
				appd J.TSAO 09/08/93	sheet
sheet	revision			unit	2 of 2
index	sheet			mm/inch	
				scale	
				A4	
				76361	